

MSDS

MATERIAL SAFETY DATA SHEET

Prepared For : Juwel Aquarium AG & Co. KG
Karl-Göx Str.1D-27356 Rotenburg Germany

Prepared By : Zhongshan LCS Compliance Testing Laboratory Ltd.
Y1403, 14th Floor, One of the 15 East Xinxing Avenue, Guzhen Town,
Zhongshan City, Guangdong Province.

Issue Date : June 14, 2022
Report Number : KA2206080103A

Written by: Terry.Wang

Approved by: Cat Zhang

Material Safety Data Sheet

Section 1-Chemical Product and Company Identification

Product: POSTERFIX

Trade mark: JUWEL

Model(s): N/A

Manufacture: Guangzhou Zhongyi trading ltd.

Address: 419 room No.81 Kefeng road High-tech development zone Guangzhou city, Guangdong

Post Code: /

Fax No: /

Emergency Telephone: /

Section 2- Composition/Information on Ingredient

Chemical Name	Molecular formula	CAS No.	In % By Weight
Dimethylsilicone oil	$C_2H_8O_2Si$	63148-62-9	98.3
dimethisterone	$C_{23}H_{32}O_2$	79-64-1	1.49
Aluminum Powder	AlH_3	7429-90-5	0.12
Copper	Cu	7440-50-8	0.05
Mercury	Hg	7439-97-6	0.04

Section 3- Hazards Identification

Explosion hazard: This product does not burn.

Health effects: inhalation of silica dust, the main harm to the body is caused by silicosis. At present, it is not specific to silicosis Dust control is the key to effective therapeutic drugs

Material Safety Data Sheet

Section 4- First Aid Measures

Skin contact: take off contaminated clothes and rinse with flowing water.

Eye contact: lift the eyelids and rinse with flowing water or normal saline. See a doctor.

Inhalation: leave the site to fresh air.

Ingestion: drink enough warm water to induce vomiting. See a doctor.

Section 5- Fire Fighting Measures

Hazard characteristics: it can react violently with chlorine trifluoride, manganese trifluoride and oxygen trifluoride. Harmful combustion products: natural decomposition products are unknown.

Fire fighting method: move the container from the fire site to an open place as far as possible. Fire extinguishing agents: fog water, foam, dry powder, carbon dioxide and sand.

Section 6- Accidental Release Measures

Emergency treatment: isolate the contaminated area and restrict the access. It is suggested that emergency treatment personnel should wear dust masks and general working clothes. Do not come into direct contact with the leakage. Small amount of leakage: avoid dust, sweep it carefully, put it in the bag and transfer to a safe place. Large amount of leakage: collected and recycled or transported to the waste disposal site for disposal.

Section 7- Handling and Storage

Operation precautions: the production process should be sealed. Prevent dust from being released into the air of the workshop. Operators must be specially trained and strictly abide by the operation rules. It is suggested that operators should wear self-priming filter dust masks, chemical safety glasses and latex gloves. Avoid dust generation. Avoid contact with chlorine trifluoride. Equipped with leakage emergency treatment equipment. The empty container may contain harmful substances.

Storage precautions: store in cool and ventilated warehouse. Keep away from fire and heat sources. Protect from direct sunlight. The package is sealed. It should be stored separately from chlorotrifluoride and should not be mixed. The storage area should be equipped with suitable materials to contain the leakage.

Material Safety Data Sheet

Section 8- Exposure Controls, Personal Protection

China MAC (mg / m3): 6

MAC (mg / m3): 2-6

TLVTN: ACGIH 10mg / m3 (based on aluminum)

TLVTN: no standard

Monitoring method: pyrophosphoric acid quality method

Engineering control: closed production process. Ensure good spontaneous combustion ventilation.

Respiratory system protection: when the dust concentration in the air exceeds the standard, it is recommended to wear self-priming filter dust mask. Emergency rescue or evacuation

When leaving, you should wear an air respirator.

Eye protection: wear chemical safety glasses.

Body protection: generally no special protection is required.

Hand protection: wear latex gloves.

Other protection: shower and change clothes after work. Keep good hygiene.

Section 9- Physical and Chemical Properties

Physical state: Powder

Color: Black

Odor: N/A

Evaporation point: N/A

Flash point: N/A

Boiling point: N/A

Melting point: N/A

Section 10- Stability and Reactivity

Stability:

Prohibited substance: chloro trifluoride

Conditions to avoid contact: moist air.

Material Safety Data Sheet

Section 11- Toxicological information

Acute toxicity: No data available

LD50: No data

Subacute and chronic toxicity: No data available

Irritation: No data available

Sensitization: No data

Mutagenicity: No data available

Teratogenicity: No data available

Carcinogenicity: No data available

Section 12- Ecological Information

Biodegradability: Data not available

Precautions: Not available

Section 13- Disposal Considerations

Disposal method: safe burying method.

Section 14 – Transport Information

Dangerous goods No.: N/A

UN number: N/A

Package mark: N/A

Packing category: Z01 packing method: the packing should be complete and the loading should be safe.

During transportation, ensure that the container does not leak No collapse, no fall, no damage. It is strictly forbidden to mix loading and transportation with oxidants and edible chemicals. It should be protected from sun and rain during transportation Keep away from high temperature. The vehicles shall be thoroughly cleaned after transportation. Transportation precautions: railway transportation shall be carried out in strict accordance with the railway According to the dangerous goods loading list in the dangerous goods transport rules of the people's Republic of China. Road transportation should be carried out according to the prescribed

Route Stop in residential and densely populated areas. It is forbidden to slide when transporting by railway.

Route Stop in residential and densely populated areas. It is forbidden to slide when transporting by railway.

Material Safety Data Sheet

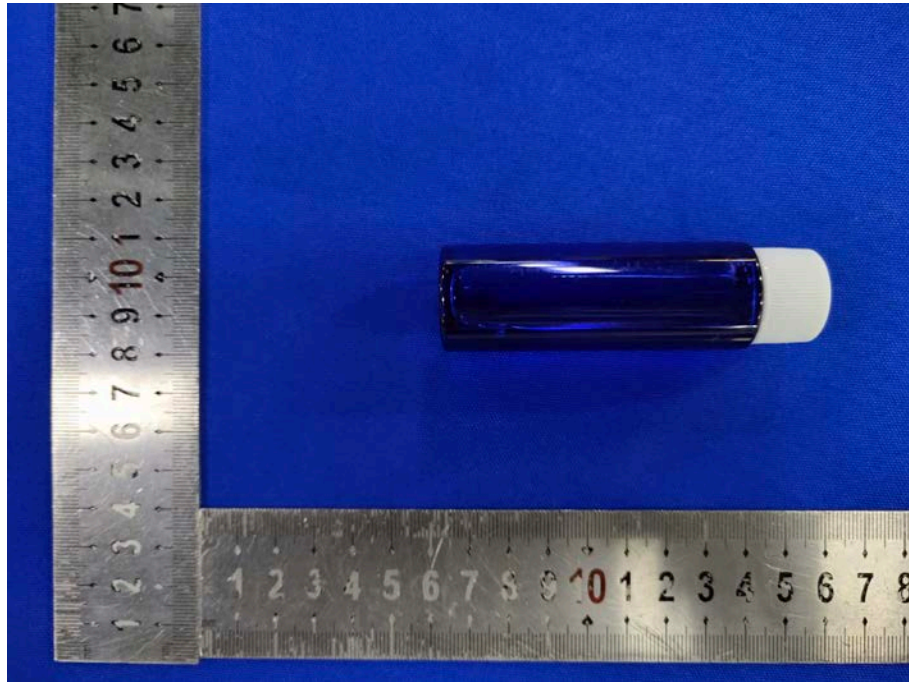
Section 15- Regulatory information

Regulations Information regulations on the safety management of hazardous chemicals (promulgated by the State Council on February 17, 1987), detailed rules for the implementation of regulations on the safety management of hazardous chemicals (HLF [1992] No. 677), regulations on the safe use of chemicals in workplaces ([1996] LBF No. 423) and other regulations have made corresponding provisions on the safe use, production, storage, transportation, loading and unloading of hazardous chemicals; The hygienic standard for aluminum, alumina and aluminum alloy dust in the air of workplace (GB 11726-89) specifies the maximum allowable concentration and detection method of the substance in the air of workplace.

Section 16- Other Information

The above information is based on the data of which we are aware and is believed to be correct as of the data hereof. Since this information may be applied under conditions beyond our control and with which may be unfamiliar and since data made available subsequent to the data hereof may suggest modifications of the information, we do not assume any responsibility for the results of its use. This information is furnished upon condition that the person receiving it shall make his own determination of the suitability of the material for his particular purpose.

Photo Documentation



LCS authenticate the photo on original report only

*** End of Report ***

The test report is effective only with both signature and specialized stamp. The result(s) shown in this report refer only to the sample(s) tested. Without written approval of LCS, this report can't be reproduced except in full.

